



# GMT MONTHLY MEMBERSHIP PROGRESS REPORT

Results as of: 12/31/2023

Multiple District 321

LOCATION: INDIA

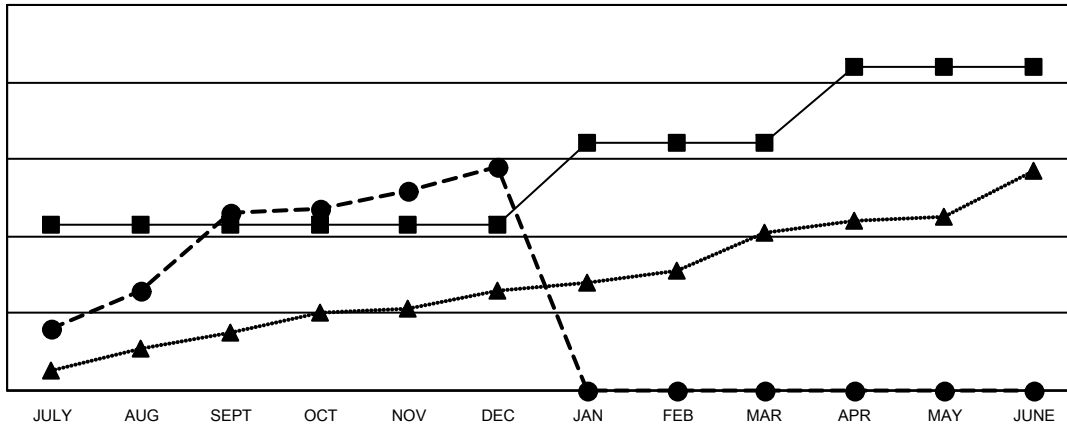
GMT: OPEN

GMT CA 6 - I

Clubs			
RESULTS FOR 2023-2024			
QUARTER	NEW CLUB GOAL	NEW CLUBS	DROPPED CLUBS
JULY/AUG/SEPT	43	46	9
OCT/NOV/DEC	0	12	32
JAN/FEB/MAR	21	0	0
APR/MAY/JUNE	20	0	0

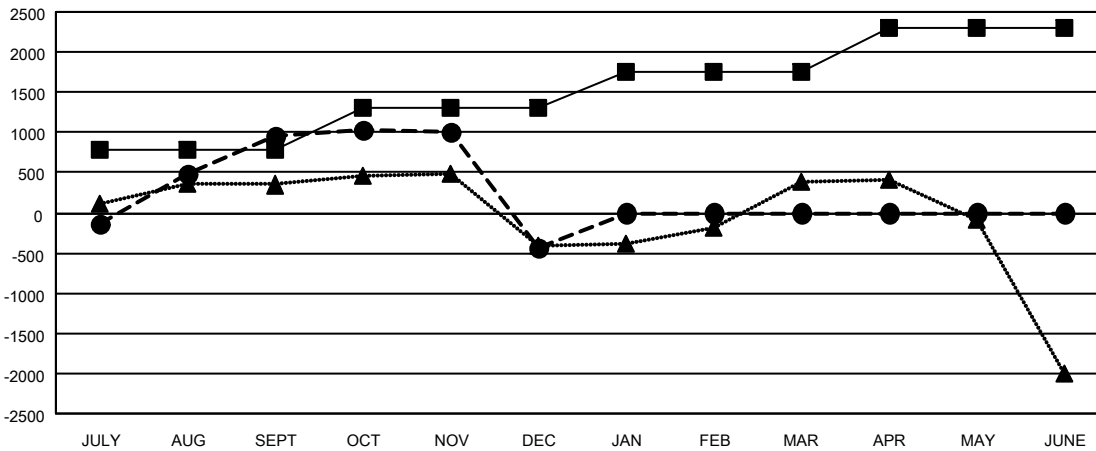
Members			
RESULTS FOR 2023-2024			
QUARTER	MEMBER GROWTH NET GOAL	MEMBER GROWTH ACTUAL	DROPPED MEMBERS ACTUAL (including transfers)
JULY/AUG/SEPT	790	2,914	1,565
OCT/NOV/DEC	515	1,227	2,484
JAN/FEB/MAR	442	0	0
APR/MAY/JUNE	545	0	0

GOALS AND ACTUAL NEW CLUBS CUMULATIVE



- - CURRENT YEAR GOALS FOR NEW CLUBS
- - CURRENT YEAR ACTUAL NEW CLUBS
- ▲ - LAST YEAR ACTUAL NEW CLUBS

GOALS AND ACTUAL MEMBERS CUMULATIVE



- - MEMBER GROWTH NET GOAL
- - MEMBER GROWTH ACTUAL
- ▲ - LAST YEAR MEMBERSHIP ACTUAL

DROPPED CLUBS: 41	537 CLUBS OF 1188 ADDED 1 OR MORE NEW MEMBERS	<b>GENDER DISTRIBUTION</b>
		MALE 21,725 (69.92%)
		FEMALE 9,346 (30.08%)
<b>DROPPED MEMBERS</b>	<a href="#">CLICK HERE FOR CUMULATIVE MEMBERSHIP DATA</a>	TOTAL FAMILY UNIT MEMBERS 16,105
DECEASED 67		FAMILY MEMBERS PAYING HALF DUES 9,587
CLUB CANCELLED 562		
OTHER 3,420		
<b>TOTAL 4,049</b>		